



SHOP

MOBILE

MORE

SUBMIT

Join

Login



[Tutorial] Convert Photoshop Brush to Clip Studio

by lillendandie, Jan 29, 2017, 9:15:00 AM

Resources & Stock Images / Tutorials / Application Reference / Other

You will need:

- A Windows PC (XP,7,8,10)
- Adobe Photoshop (Optional)
- Photoshop brush file (.abr)
- Clip Studio (Manga Studio 5)

Step 1

Download and install AbrMate (Free)

www.texturemate.com/abrMate

Step 2

Launch AbrMate.

Click "Open Brush Set" and select the PS brush you want to convert.

Step 3

Wait for the brushes to load into the program.

More from lillendandie

[Tutorial]
How to use
Clip Studio
Assets



Lillendandie's
Frequently
Asked
Questions
(FAQ)



[View Gallery](#)

Featured in Collections

Brushes by ewolf20

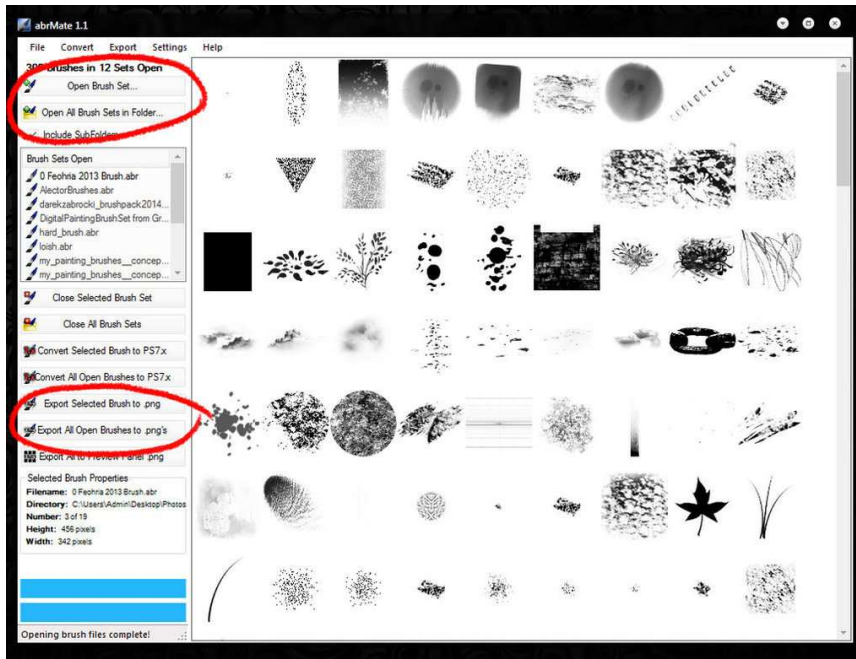
digital brushes + resources by warp-y

brushes by LavraInANutshell

[View More](#)

More from DeviantArt

Click the "Export All Open Brushes to .pngs" and save them in a new folder.



Step 4

Open Clip Studio.

File > Open > Select one of the .pngs you just created.

Step 5

Open the Layers Window. (If you don't see it open it via Window > Layers)

In the upper left corner of the Layers Window, click the arrow icon with 3 little lines beside it.

[Browse More Like This](#) · [Shop Similar Prints](#)

Featured in Groups



Divine-Tutorials
Tutorials befitting a deity!



ClipStudioPaintPro



ClipStudioPaint
For all the CSP/MS enthusiasts.



help-resources
Find all the help you need!



MangaStudio-Comics

Details

Submitted on **January 29**
Submitted with **Sta.sh Writer**

Link

<http://fav.me/dax4p52>

Thumb

:thumb660308294:

Stats

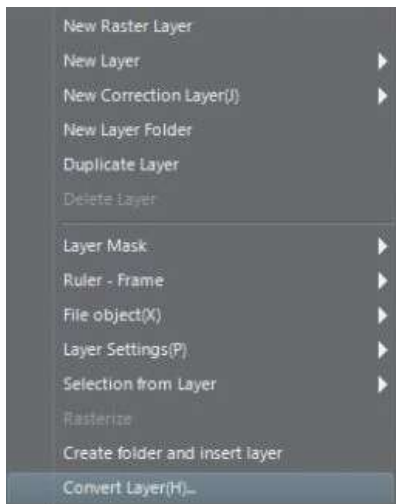
Views **6,830** (9 today)
Favourites **166** (who?)
Comments **38**



Select "Convert Layer(H)..."

A "Convert Layer" box should pop up.

Change the "Expression color:" from Color to Gray.
Click OK.

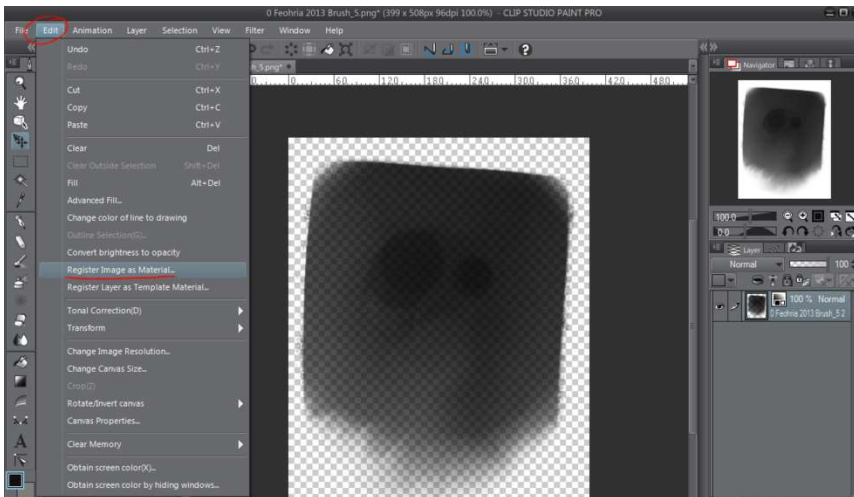




If you see this icon you have converted your layer correctly.

Step 6

Go to "Edit" > "Register Image As Material". A Material Property box should appear.



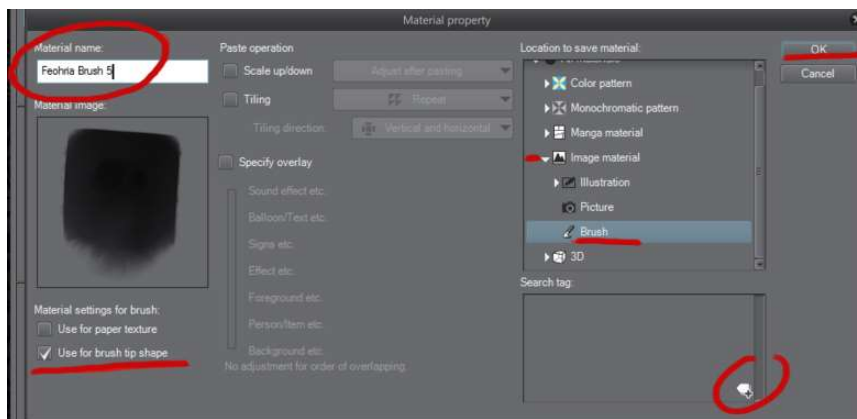
Change the "Material name:" to whatever you want to call the brush. (Choose a name that is easy to remember.)

Check the "Use for brush tip shape" box.

In the "Location to save material box" select "All materials" > "Image material" > "Brush"

Locate the "Search tag:" box. Select the + icon in the bottom right corner.

Type in your desired tag. (A search tag can be whatever you want just make it easy to remember so you can find it later. Example: your user name, chalk, hair, etc.)

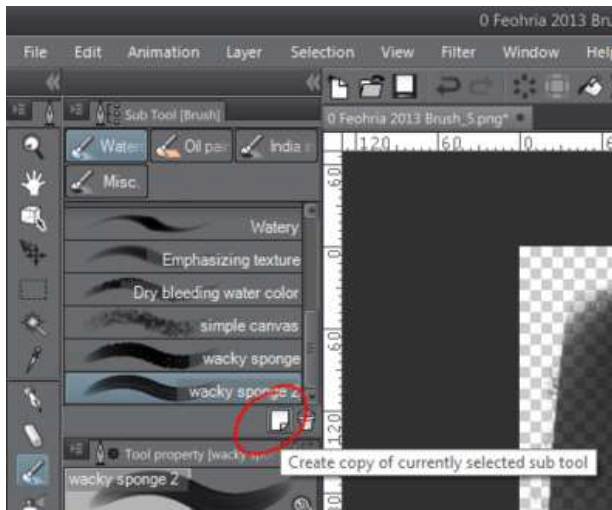


Step 7

In your toolbox, locate the "Sub Tool [Brush] box"

(If you don't see it, the hot key is B. Make sure Window > Sub Tool [Brush] is checked.)

Select an existing brush (preferably something similar to what you're trying to create).



Duplicate it by selecting the icon that looks like a piece of paper at the bottom right corner.

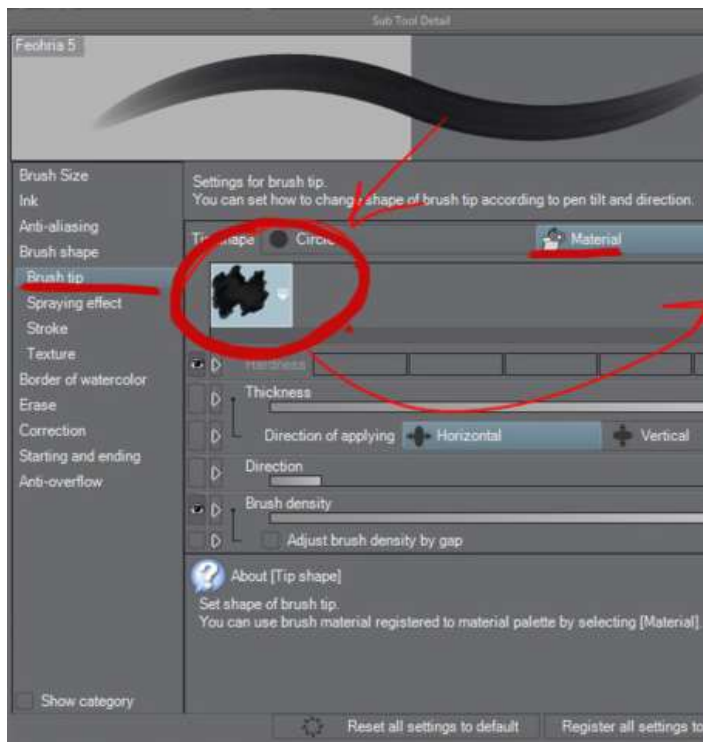
Change the "Name:" to whatever you want to call the new brush. You can also change the "Tool icon:".

Step 8

With the new brush selected, locate a box called "Tool property [YourBrushName]"

(If you don't see it, make sure Window > Tool Property [YourBrushName] is checked.)

Click the wrench in the far bottom right corner.

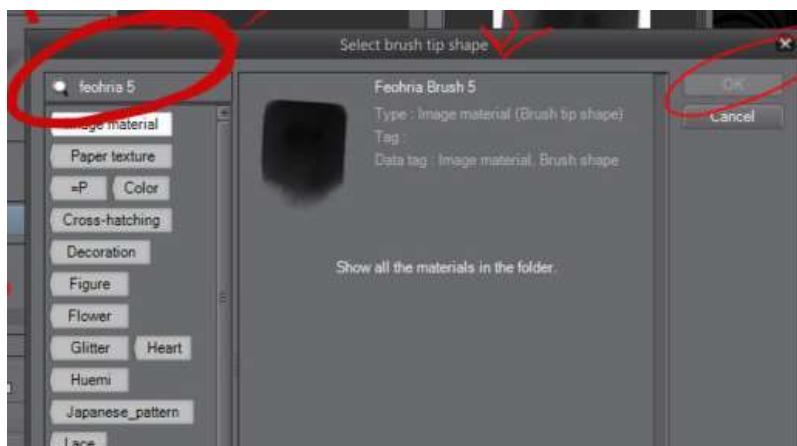


Step 10

Click the search box and type in the name or tag you used for your brush earlier.

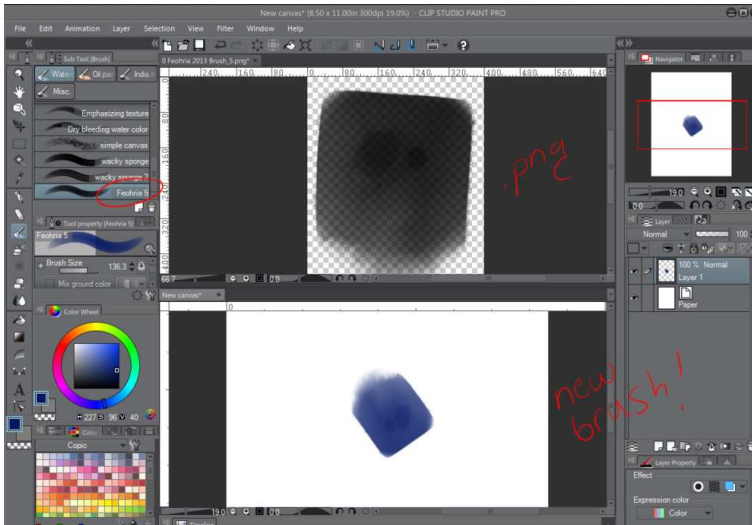
All of the registered brush tip materials will show up in the right of the box.

Once you have found your new brush tip, select it and click OK.



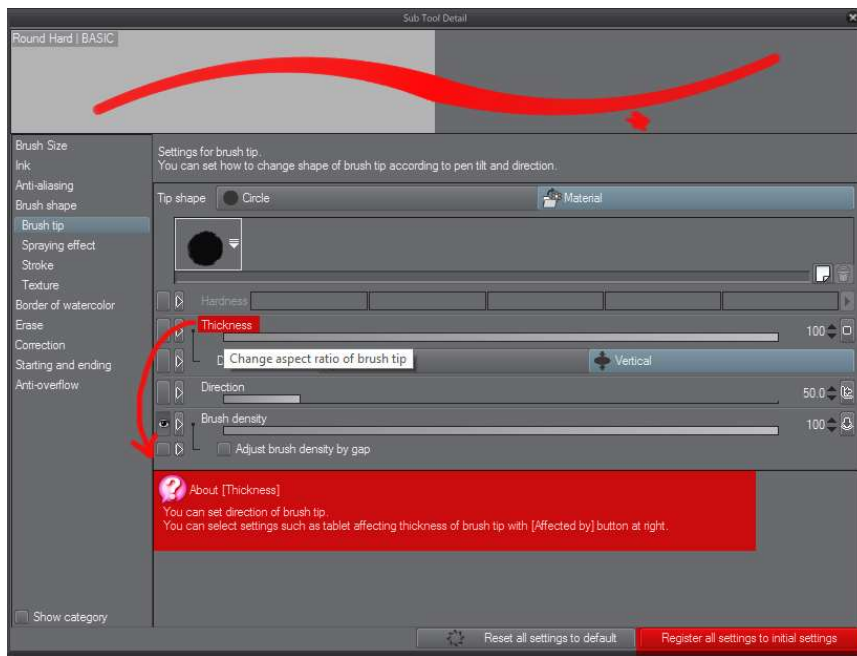
Step 11 – Finishing Up

Open a new canvas and test your brush.



Does it behave how you want it to?

Unfortunately, **the settings of the original Photoshop brush DO NOT transfer over.** At this point, the brush may look and feel completely different compared to the original. However, Clip Studio has a really powerful brush engine loaded with a ton of settings. If you spend some time studying the Sub Tool Detail Box, it won't be long before you start to learn what everything does. From this point, you can begin to make small tweaks to your brushes. Through trial and error you can make Clip Studio brushes behave very similar to their Photoshop counterparts.



Keep playing around with different settings until you get the hang of things.

Once you are satisfied with your brush, save settings by hitting the "Registering as initial settings" button.



Happy Creating! Have a question? Ask in the comments below.



[Tutorial] Convert Photoshop Brush to Clip Studio

by lillendandie

Resources & Stock Images / Tutorials / Application Reference / Other ©2017 lillendandie

atch