

Hashiveinee

Sung by Yedidim Choir

Composed by Dudy Kalish

♩ = 60

Emi F#mi Emi/G F#mi Bmi Emi

intro



Emi Ami Ami Emi G Ami Emi Ami Ami F#7



F#7 Emi G Ami Emi Ami Emi Ami Emi

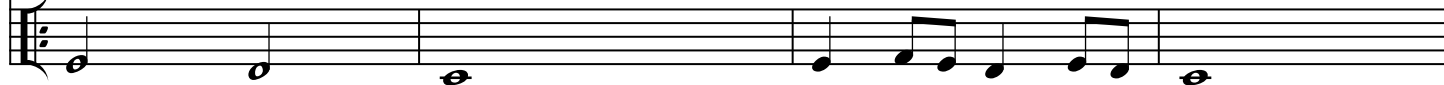


Emi Ami Emi Ami

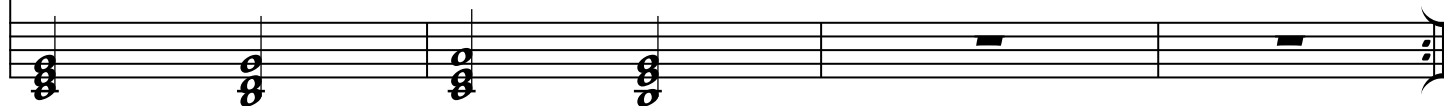


A

(2nd x only)



C G Ami Emi Ami Emi Ami Emi B



Ami Emi/B B Emi



Berko Productions

2

Emi

Ami

Emi

Emi

B

Musical notation for system B, first staff. Treble clef, key signature of one sharp (F#). The staff contains a sequence of eighth notes: G4, A4, B4, C5, B4, A4, G4, F#4, E4, D4, C4. There are rests in the second and fourth measures.

(2nd x)

Ami

C

Ami

Musical notation for system B, second staff. Treble clef, key signature of one sharp (F#). The staff contains a sequence of eighth notes: G4, A4, B4, C5, B4, A4, G4, F#4, E4, D4, C4. There are rests in the second and fourth measures.

Musical notation for system B, third staff. Treble clef, key signature of one sharp (F#). The staff contains a sequence of eighth notes: G4, A4, B4, C5, B4, A4, G4, F#4, E4, D4, C4. There are rests in the second and fourth measures.

1.

Emi

Ami

Emi

2.

Emi

Ami

Emi

Musical notation for system B, fourth staff. Treble clef, key signature of one sharp (F#). The staff contains a sequence of eighth notes: G4, A4, B4, C5, B4, A4, G4, F#4, E4, D4, C4. There are rests in the second and fourth measures.

Emi Ami

Ami Emi

G

Ami

Emi

Ami

Ami

F#7

C

Musical notation for system B, fifth staff. Treble clef, key signature of one sharp (F#). The staff contains a sequence of eighth notes: G4, A4, B4, C5, B4, A4, G4, F#4, E4, D4, C4. There are rests in the second and fourth measures.

F#7 Emi

G

Ami

Emi

Ami

Emi

Ami

Emi

Musical notation for system B, sixth staff. Treble clef, key signature of one sharp (F#). The staff contains a sequence of eighth notes: G4, A4, B4, C5, B4, A4, G4, F#4, E4, D4, C4. There are rests in the second and fourth measures.