



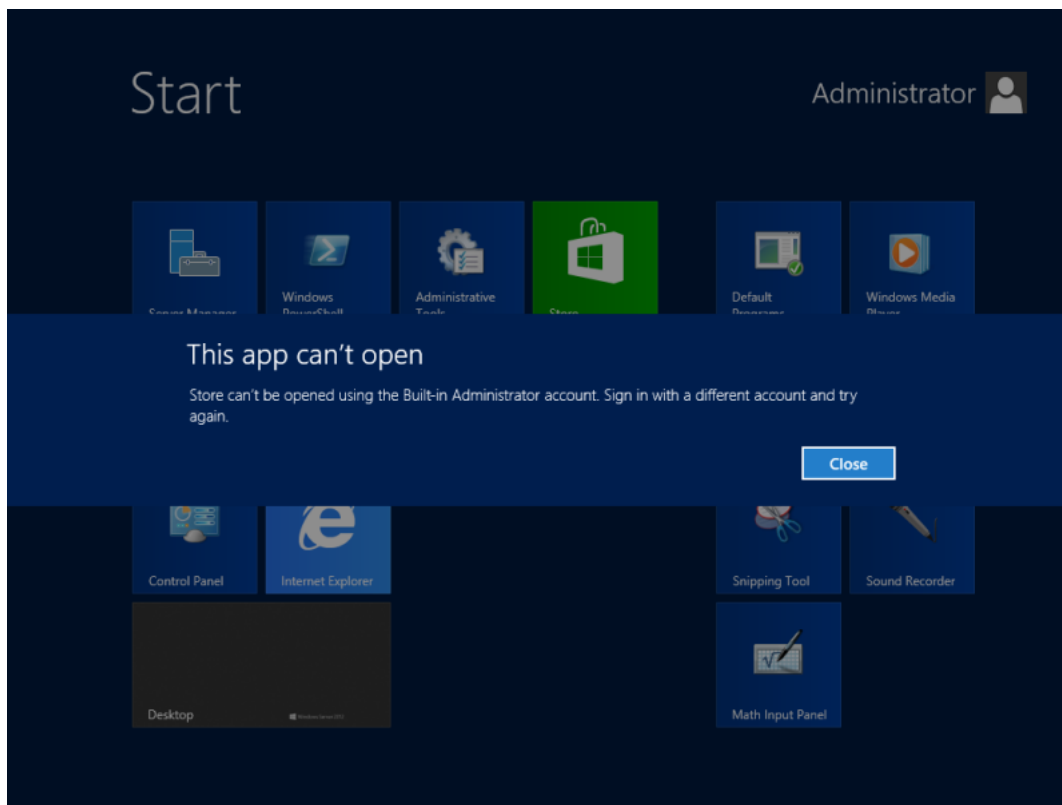
Home ▶ Notes ▶ Computer ▶ Windows 8 - Fix This app can't open for Built-in Administrator account

## Windows 8 - Fix This app can't open for Built-in Administrator account

### You got any of these annoying errors with Built-in Administrator account on Windows 8?

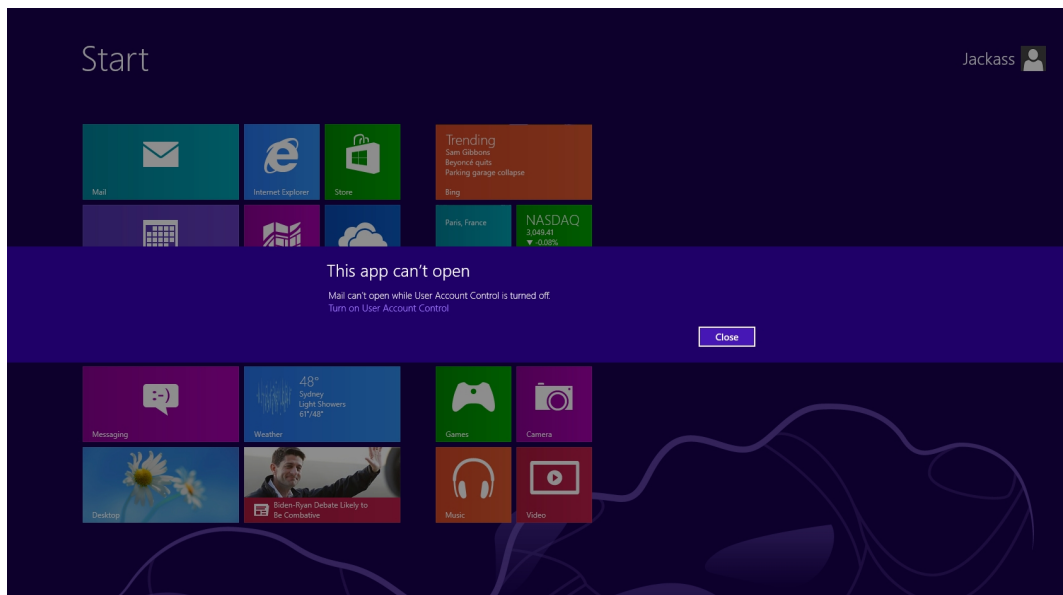
This app can't open

can't be opened using the Built-in Administrator account. Sign in with a different account and try again.



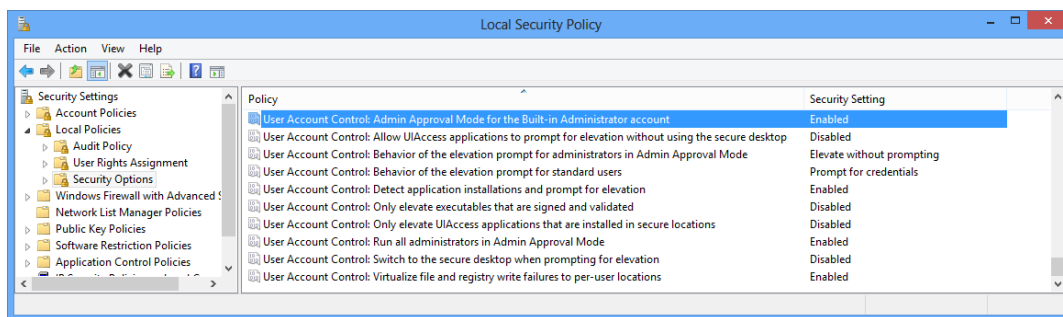
or?

This app can't open  
can't open while User Account Control is turned off.  
Turn on User Account Control

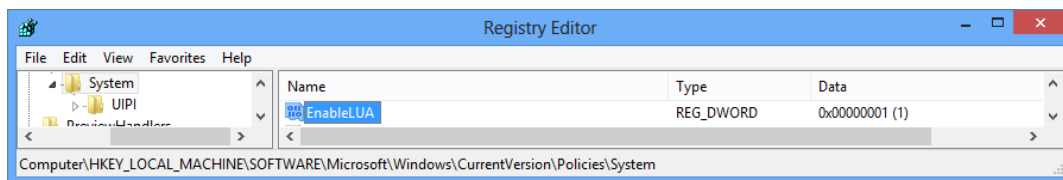


Here is the solution:

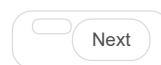
1. Local Security Policy - Run "secpol.msc" and modify as in screenshot



2. Edit Registry - Run "regedit" and change the value as in screenshot



3. Reboot your System and now you can run all metro Apps as Administrator.



Comments

1 2 3

#21 **Sandu** 2017-04-14 09:30  
You are grate man! Realy working!

0  
Quote

#20 **Ken Mason** 2016-04-20 23:58  
In Windows 8 and 10, you can use TweakUAC to stop ALL prompts, elevated or not.

The fix for this is quite simple. No Modern App (including Edge) will run with Win10 if UAC is disabled. Either enable it and live with the prompts, or install TweakUAC (<https://www.winability.com/tweak-uac/>) and choose Quite Mode. That's it. You can even have UAC completely disabled, and this will still stop all prompts.

0  
Quote

#19 **Shivaji** 2015-07-25 06:35  
Thanks a lot

-1  
Quote

#18 **Glynn** 2014-12-05 13:36  
Worked for me thanks. Awesome.

0  
Quote

#17 **George** 2014-04-14 09:09  
Thank you! It is the only working solution for windows 8.1 pro

+1

Quote

#16 **John Barlow** 2014-04-12 20:48  
A genuine relief. Thank you very much!

-1

Quote

#15 **Asagrim** 2014-03-31 18:40  
So the only way to run metro apps, is to reintroduce the very same feature to the Administrator account i stopped using others for? (Programs running by default on different access levels introducing a number of issues.)

+1

While i appreciate the effort, this solution is not a solution at all, as it nullifies the entire reason of the Administrator account's existence.

Quote

#14 **John** 2014-01-31 06:17  
Thanks for the tutorial. After reading, I was determined to find the way to do it in the command-line. Here is my finding:

+3

Simply run these three lines in the command-line and you will get the same result! The first two lines updates the security policy, and the third line logs you out. You need to log out and re-log in for the security policy changes to take effect.

Cheers! :)

```
REG ADD HKLM\SOFTWARE\Microsoft\Windows\CurrentVersion\Policies\System /v EnableLUA /t REG_DWORD /d 1 /reg:64 /f
```

```
REG ADD HKLM\SOFTWARE\Microsoft\Windows\CurrentVersion\Policies\System /v FilterAdministratorToken /t REG_DWORD /d 1 /reg:64 /f
```

```
SHUTDOWN -L
```

Quote

#13 **Peter R. Wilson** 2013-11-28 10:11  
Wow ! You are, quite simply, a bloody treasure ! Well done and Thanks a LOT

+3

Quote

#12 **rhys** 2013-11-18 11:17  
what is the reg's location?

-1

Quote

1 2 3

- Refresh comments list
- RSS feed for comments to this post

### Add comment

Name (required)

E-mail (required, but will not display)

Website



1000 symbols left

Notify me of follow-up comments



Refresh

Send

0 Comments

